

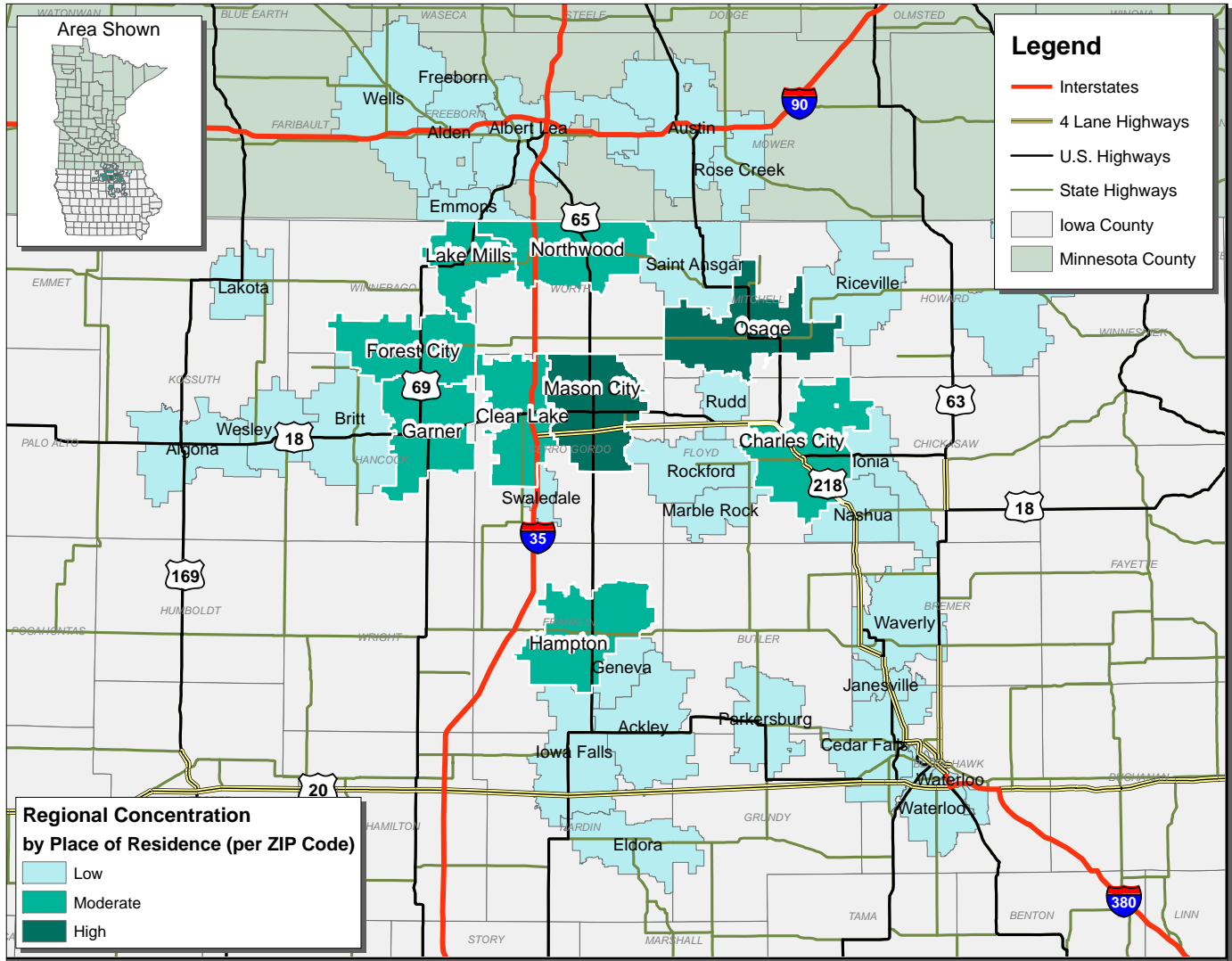
LABOR CHARACTERISTICS

INFORMATION TECHNOLOGY

NORTH CENTRAL IOWA ALLIANCE

2014 REGIONAL LABORSHED AREA

Concentration of those with transferable experience/skills by place of residence



Workers who have transferable experience/skills in the industry are currently commuting an average of 9 miles one way for work. Those who are willing to change/accept employment are willing to commute an average of 19 miles one way for the right employment opportunity.

For More Information Regarding the North Central Iowa Alliance Regional Laborshed, contact:

Terry Schumaker
Economic Development Director
North Iowa Area Community College
500 College Drive
Mason City, IA 50401
Phone: 641-422-4170
Fax: 641-422-4129
E-mail: schumter@niacc.edu
www.niacc.edu/

LABOR CHARACTERISTICS

INFORMATION TECHNOLOGY

Estimated Potential Available Labor Per Occupational Category:

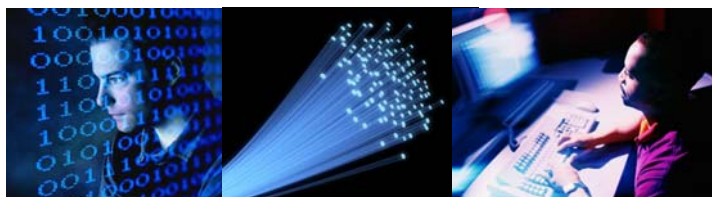
Business Operations:

- Managers - 837
- Claims Adjusters - 100
- Clerks - 3,584
- Customer Service Reps - 1,576
- Data Entry Keyers - 315
- Desktop Publishers - 213
- Management Analysts - 215
- Office & Administrative Support Workers, All Other - 1,477
- Secretaries - 5,036
- Word Processors & Typists - 96

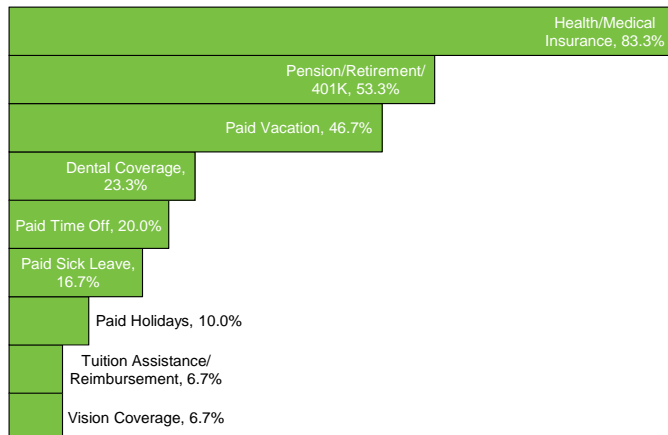
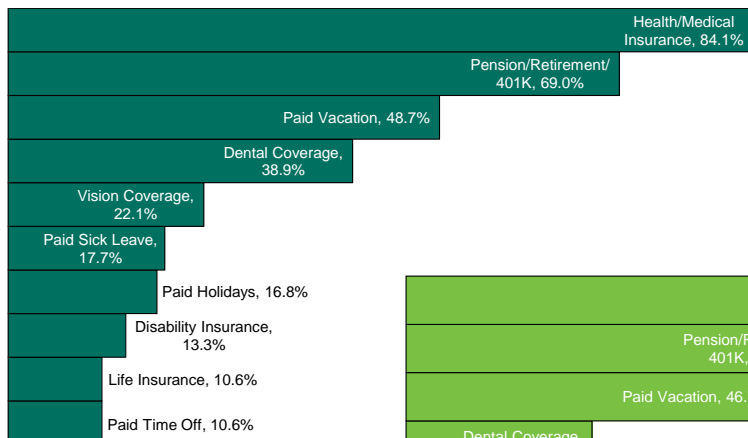
Computers:

- Managers - 99
- Computer Occupations, All Other - 1,166
- Computer Operators - 104
- Computer Programmers - 214
- Computer System Analysts - 527
- Computer User Support Specialists - 216
- Database Administrators - 102
- Information Security Analysts - 101
- Network & Computer Systems Administrators - 98
- Software Developers, Applications - 317

An estimated total of **16,393** people in the Laborshed area

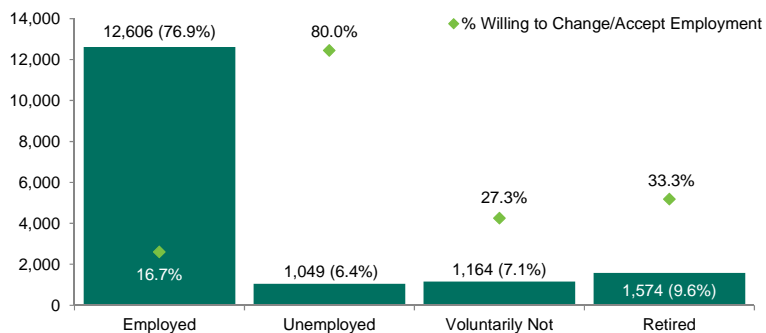


Current Benefits:



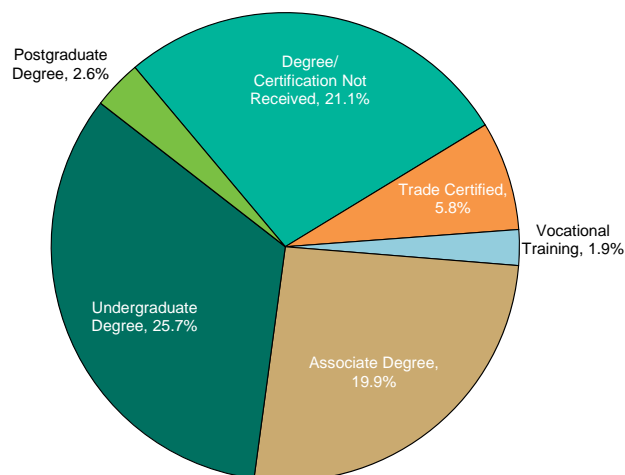
Information compiled by Iowa Workforce Development using Laborshed data released 2014.

Estimated Total by Employment Status (percentage):



Educational Level:

(77.0% Have an education beyond high school)



Workplace Flexibility:

(by percent of interest)

- Cross-training - 77.8%
- Job teams - 75.0%
- Varied shifts - 32.4%
- Job sharing - 30.6%
- Seasonal work - 55.6%
- Temporary work - 55.6%

Additional Facts:

- 65.2% paid an hourly wage
- 69.9% are/were employed full-time
- 23.1% are/were employed part-time
- 3.8% are/were self-employed
- 11.8% hold two or more jobs
- Currently working an average of 38 hours/week

Underemployment:

Total Underemployment - 3.2%

- Low hours - 1.3%
- Mismatch of skills - 1.9%
- Low income - 0.0%

IWD only counts individuals once when estimating Total Underemployment.

Top Advertising Media:

(for those seeking employment opportunities by use)

- Internet - 79.3%
 - www.monster.com
 - www.linkedin.com
 - www.iowajobs.org
- Local/Regional Newspapers - 51.5%
 - *Globe Gazette* - Mason City
 - *The Des Moines Register*
- Networking through friends, family or acquaintances - 19.3%
- IowaWORKS Centers - 15.0%

LABOR CHARACTERISTICS

INFORMATION TECHNOLOGY

Occupation	Occupational Code	Mean Wage	Entry Wage	Experienced Wage	Median Wage	Median Annual Wage
Administrative Services Managers	11-3011	\$ 32.29	\$ 24.25	\$ 36.31	\$ 29.57	\$ 67,166
Computer and Information Systems Managers	11-3021	\$ 47.04	\$ 30.55	\$ 55.28	\$ 46.56	\$ 97,833
Computer Network Support Specialists	15-1152	\$ 22.99	\$ 15.62	\$ 26.68	\$ 20.82	\$ 47,827
Computer Occupations, All Other	15-1199	\$ 28.65	\$ 15.14	\$ 35.41	\$ 28.26	\$ 59,601
Computer Systems Analysts	15-1121	\$ 33.19	\$ 19.12	\$ 40.23	\$ 31.40	\$ 69,041
Computer User Support Specialists	15-1151	\$ 18.89	\$ 11.65	\$ 22.51	\$ 17.63	\$ 39,292
Customer Service Representatives	43-4051	\$ 16.34	\$ 10.52	\$ 19.25	\$ 16.12	\$ 33,989
Data Entry Keyers	43-9021	\$ 14.02	\$ 11.89	\$ 15.09	\$ 13.64	\$ 29,168
Executive Secretaries and Executive Administrative Assistants	43-6011	\$ 18.60	\$ 13.23	\$ 21.28	\$ 17.59	\$ 38,681
Information and Record Clerks, All Other	43-4199	\$ 15.53	\$ 12.57	\$ 17.00	\$ 15.30	\$ 32,294
Management Analysts	13-1111	\$ 37.52	\$ 23.63	\$ 44.47	\$ 31.91	\$ 78,047
Network and Computer Systems Administrators	15-1142	\$ 27.77	\$ 19.82	\$ 31.75	\$ 26.89	\$ 57,769
Office and Administrative Support Workers, All Other	43-9199	\$ 16.29	\$ 8.07	\$ 20.39	\$ 14.34	\$ 33,875
Office Clerks, General	43-9061	\$ 13.72	\$ 9.86	\$ 15.65	\$ 13.46	\$ 28,542
Receptionists and Information Clerks	43-4171	\$ 10.98	\$ 8.17	\$ 12.39	\$ 10.26	\$ 22,840
Secretaries and Administrative Assistants, Except Legal, Medical, and Executive	43-6014	\$ 13.90	\$ 9.38	\$ 16.16	\$ 13.22	\$ 28,917
Software Developers, Applications	15-1132	\$ 29.15	\$ 21.67	\$ 32.88	\$ 29.46	\$ 60,626
Training and Development Specialists	13-1151	\$ 21.50	\$ 11.95	\$ 26.27	\$ 20.93	\$ 44,712

The 2014 Iowa Wage data for the Iowa Workforce Development Region 2 service area was produced by the Labor Force & Occupational Analysis Bureau to provide communities local information on wages by occupation. The source of the wage and employment data is based on the May 2013 OES estimates. Additional occupational wage and employment data can be found at <http://iwin.iwd.state.ia.us/iowa/OlmisZine>.